

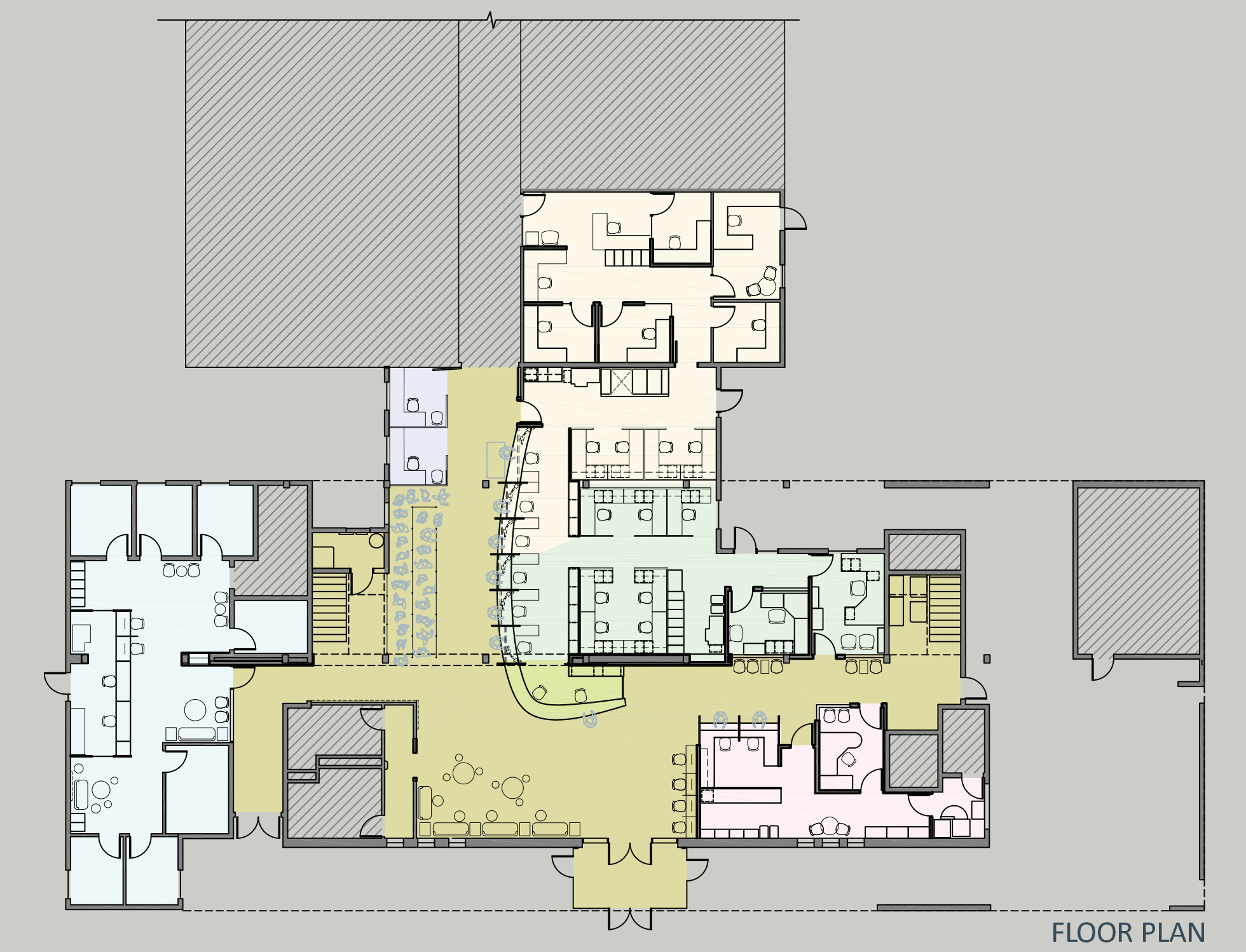
- 1 WELCOME DESK / LOBBY
- 2 QUEUING AREA
- 3 ENROLLMENT SERVICES
- 4 FINANCIAL AID
- 5 OFFICE OF ELIGIBILITY
- 6 OFFICE OF CASHIERING
- 7 ADVISING CENTER
- 8 RESTROOMS
- 9 ELEVATOR



VIEW FROM ENTRY



VIEW FROM QUEUING AREA



FLOOR PLAN

BUILDING 17 STUDENT SERVICES REMODEL
 CLOVER PARK TECHNICAL COLLEGE